



118 Charterhouse Road

Orpington BR6 9ER

Guide Price £775,000

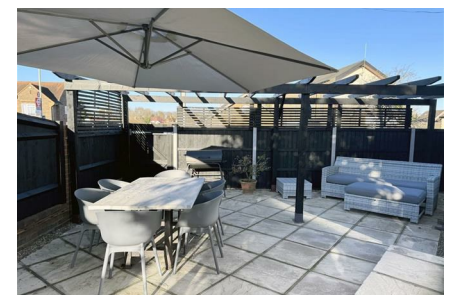


Guide Price £775,000 - £800,000

Situated in the thriving suburban town of Orpington is this fantastic four bedroom semi detached family home which has been lovingly maintained and stylishly decorated, oozing personality and character. The property sits on an ample plot offering a sophisticated garden with a pergola and a generous amount of parking. The two storey extension has transformed this house into a substantial size home. Upon entering, the light and spacious hallway offers access to all ground floor rooms including a convenient downstairs cloakroom/wc and a utility, other than the lounge which can be found to the rear. The kitchen breakfast room is a sleek shaker design with contrasting works tops to finish. The 1st floor is home to four bedrooms and a family bathroom. The impressive master bedroom has an en-suite shower room and walk in wardrobe.

Orpington town has many amenities within close proximity including motorway links, many railway stations that can transport you into London in as little as 15 minutes, and the reputable 'outstanding' schools. The local town is buzzing with a range of shops, restaurants, entertainment, and leisure. Blue water shopping centre and Bromley main town can be found within 10miles. Call now to get your chance to view this truly fantastic home.

Council Tax Band E. C rated EPC.

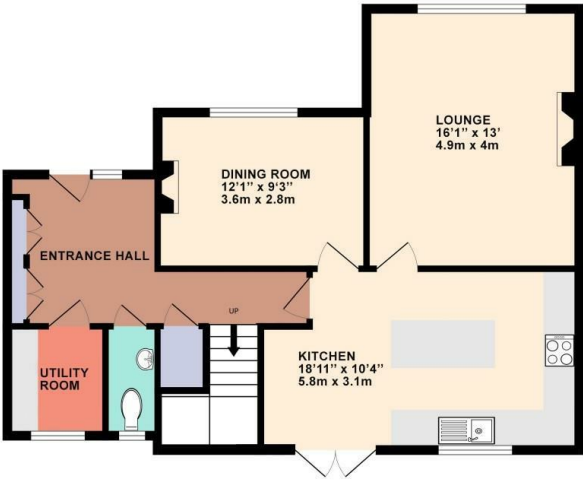


Area Map

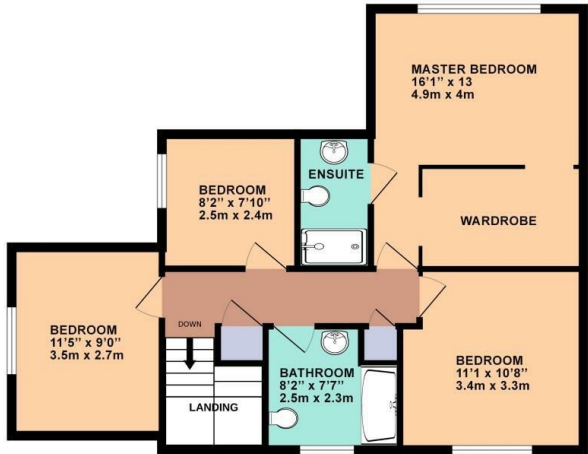


Floor Plans

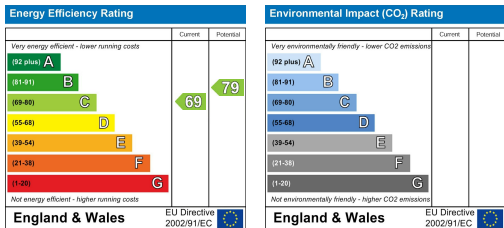
GROUND FLOOR
750 sq.ft (70 sq.m) approx



FIRST FLOOR
700 sq.ft (65 sq.m) approx



Energy Efficiency Graph



These particulars, whilst believed to be accurate are set out as a general outline only for guidance and do not constitute any part of an offer or contract. Intending purchasers should not rely on them as statements of representation of fact, but must satisfy themselves by inspection or otherwise as to their accuracy. No person in this firm's employment has the authority to make or give any representation or warranty in respect of the property.